

Corporate Events

Long Gallery



Above
The Long Gallery is perfect
for trade shows as well as
buffets and banquets.

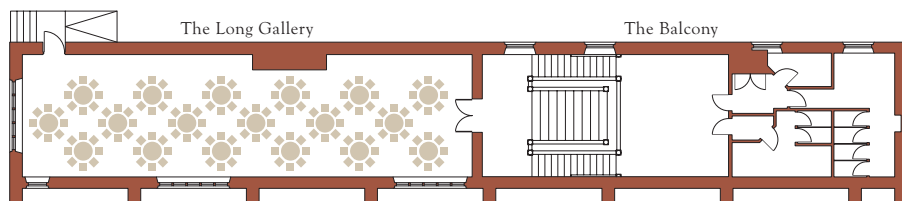
Below
The Long Gallery as seen
from the Lower Garden.

The largest single room at Layer Marney Tower is known as the Long Gallery.

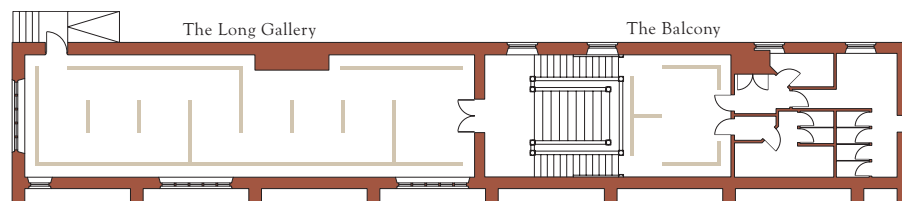
The Long Gallery is situated to the south of the Retainers Courtyard, from where it projects into the formal gardens. The principle entrance has a magnificent staircase leading into the Gallery itself – a large oak floored room some 80' x 20' feet, with a grand Jacobean fireplace and panelling.

The Long Gallery has been successfully used for product launches, presentations, concerts, banquets and buffets. There are excellent kitchens, lavatories and central heating, ensuring that the level of comfort matches the magnificent surroundings. The views from the large windows reach to the Blackwater Estuary, one of the homes of the Colchester native oyster. Light floods in through these same windows, bathing the room with a bright and airy atmosphere, which can be enhanced at any time of the year by lighting the magnificent fire.

Option 1: The Long Gallery – cabaret/dining for 144 people



Option 2: The Long Gallery – exhibition



Room	Dimensions		Capacity			Sockets		
	Feet	Metres	Boardroom	Theatre	Cabaret	13A	Data	Phone
The Long Gallery	79 x 19	24 x 5.8	70	200	150	30	6	6
Balcony	20 x 17	6 x 5.2	20	30	24	8	-	-
Lobby	14'6 x 13	4.4 x 4	12	14	12	-	-	-

A loop system is present in The Long Gallery.