

Corporate Events

East Court



Above
Individual rooms may be used for board meetings, training and interviews.

Below
Viewed across the Upper Lawn, East Court opens out directly onto the Gardens.

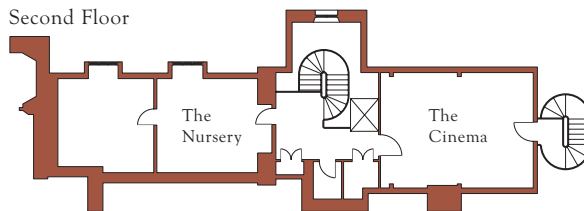
East Court contains the entrance hall and lift as well as 5 smaller meeting/break-out rooms.

The rooms of East Court can stand alone as Meeting Rooms, Board Rooms or Dining Rooms. Alternatively, they may be used in conjunction with the Corsellis Room, Tuke's Chamber, or the Long Gallery as a set of break-out rooms for larger conferences. Every room has its own character, reflecting some of the past uses of this section of the building: the Dining Room, the Map Room, the Linen Room, the Cinema and the Nursery. All the rooms are close to the lift and stairway, and on the first and second floors may be opened through to Tuke's Chamber and the Corsellis Room.

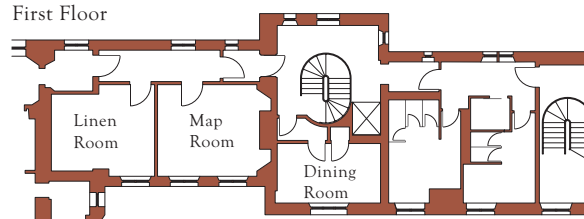
The rooms combine form with function, Edwardian style with 21st century requirements. There are projector screens in each room hidden behind Venetian hangings. There are ample power sockets (including floor mounted units), excellent lighting, and sockets for computer presentations, telephone and internet access.

The Dining Room and the Linen Room each seat up to 12 people around a Boardroom table, whilst the Map Room and the Nursery seat 14 in similar style. The Cinema is situated high up in the Tudor roof space and is well suited to informal presentations or just as somewhere quiet to sit and think. It has a projector, screen and sophisticated sound system.

Second Floor



First Floor



Room	Dimensions		Capacity			Sockets		
	Feet	Metres	Boardroom	Theatre	Cabaret	13A	Data	Phone
The Dining Room	17 x 10	5.2 x 3	12	16	-	10	2	2
The Map Room	17 x 15	5.2 x 4.5	14	18	-	12	5	5
The Linen Room	16 x 14	5 x 4.2	12	16	-	10	4	4
The Nursery	16'9 x 15	5 x 4.8	14	18	-	10	4	4
The Cinema*	24'6 x 22'6	7.5 x 5.6	20	35	-	12	5	5

A loop system is present in The Cinema.
* Restricted headroom in some parts.